

VHF to C-band Wearable Antenna, Enhanced Gain



Model Shown: BW-30-512-EG stowed

Features

- 30 – 6000 MHz wearable antenna
- Optimized for body worn EW radios
- Enhanced gain
- Low visibility
- Flexible extension
- Soft, waterproof textile covering
- Easily attaches to MOLLE rucksacks
- Other connectors available

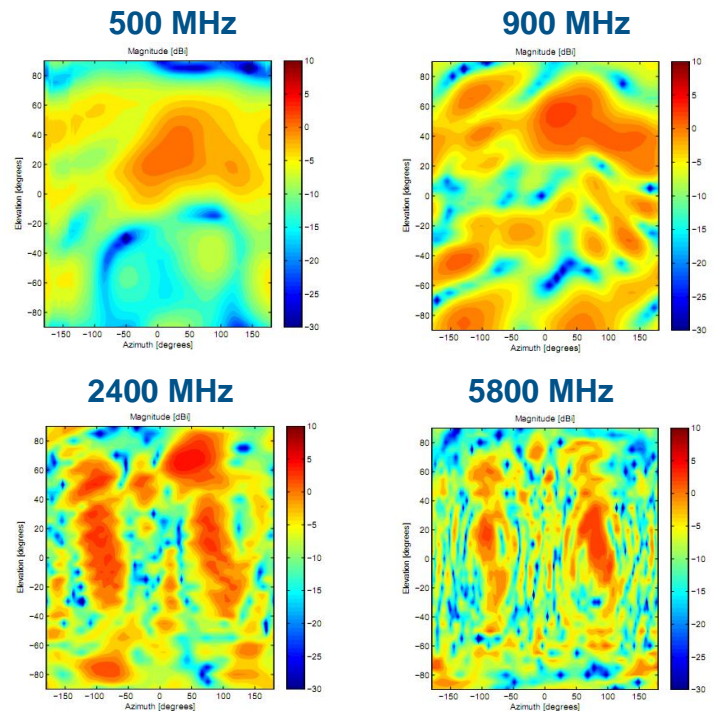
Characteristics

Model Number	BW-30-512-EG
Frequency	30 – 6000 MHz
Gain†	-7 dBi @ 30 MHz -1 dBi @ 108 MHz 3 dBi @ 225 MHz 3.2 dBi @ 512 MHz 4.0 dBi @ 1200 MHz 3.7 dBi @ 2400 MHz 4.7 dBi @ 5800 MHz
Pattern	Near Omnidirectional in Azimuth
Polarization	Vertical
Power	5 W
Size	18.5" × 11.5" × 0.5" (stowed) 41.0" × 11.5" × 0.5" (deployed)
Cable Length	25"
Weight	26 oz
Connector Type*	N-Type Male
Carrier	MOLLE Included

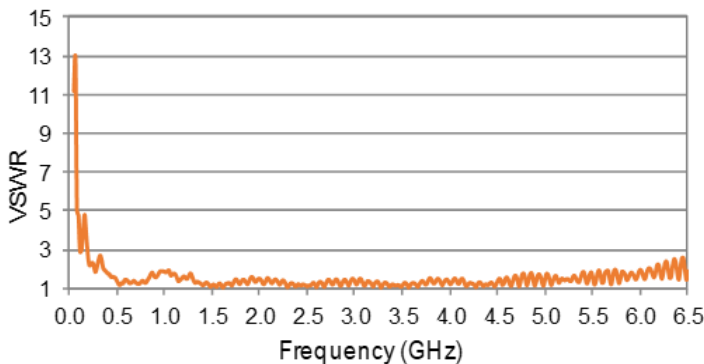
†Measurements done in free space.

*Alternate connectors available.

Radiation Performance†



VSWR†



Model Shown: BW-30-512-EG deployed

This antenna is intended for occupational use only and has been designed to comply with the IEEE (FCC) exposure limits for occupational/controlled RF exposure environments.

1340 Charwood Road, Suite L • Hanover, MD 21076 • phone 410-590-3333 • email info@octanewireless.com
www.octanewireless.com