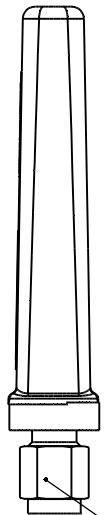
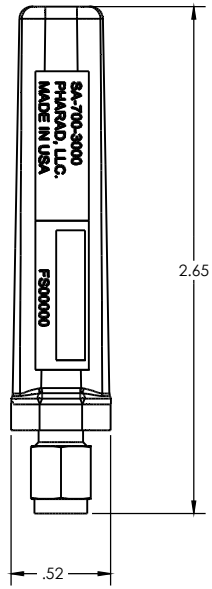


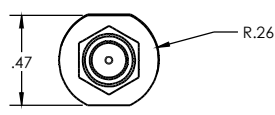
NOTES:

1. PHARAD P/N: 102505
2. TRACEABILITY: PHARAD S/N
3. PART MARKING: PHARAD MODEL NUMBER
4. FREQUENCY OF OPERATION: 700-3000 MHz
5. WEIGHT: .35 OZ

REVISIONS				
ZONE	REV.	DESCRIPTION	DATE	APPROVED
N/A	A-01	ENG RELEASE	7/13/2015	MSF
N/A	A-02		4/12/2019	MSF



SMA MALE CONNECTOR



PROPRIETARY AND CONFIDENTIAL
 THE INFORMATION CONTAINED IN THIS DRAWING IS THE SOLE PROPERTY OF PHARAD, LLC. ANY REPRODUCTION IN PART OR AS A WHOLE WITHOUT THE WRITTEN PERMISSION OF PHARAD, LLC IS PROHIBITED.

UNLESS OTHERWISE SPECIFIED: DIMENSIONS ARE IN INCHES		NAME	DATE	PHARAD, LLC 1340 CHARWOOD ROAD, SUITE L HANOVER, MD 21076 TITLE: ASSEMBLY, STUB ANTENNA, 700-3000 MHz	
TOLERANCES: TWO PLACE DECIMAL ±.010 THREE PLACE DECIMAL ±.005 ANGULAR ±1°		DRAWN	MSF		6/2/2015
MATERIAL		CHECKED	AF		7/13/2015
SEE NOTES		ENG APPR.			
FINISH		MFG APPR.			
DO NOT SCALE DRAWING		COMMENTS:		SIZE DWG. NO. REV C SA-700-3000 A-01 SCALE: 2:1 SHEET 1 OF 1	