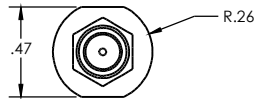
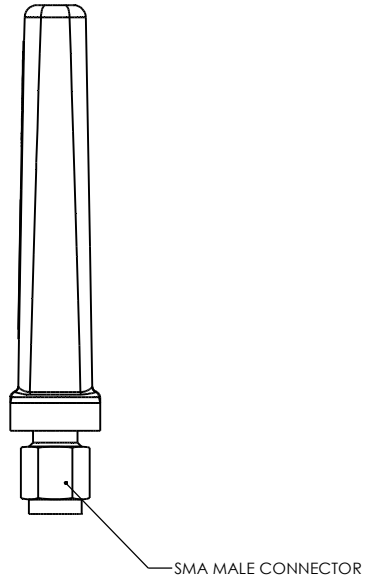
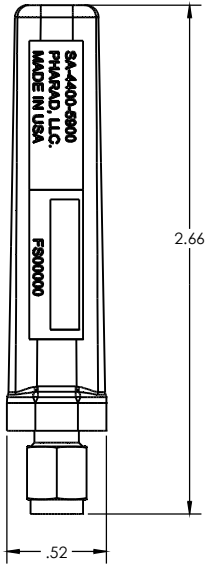


NOTES:

1. PHARAD P/N: 102934
2. TRACEABILITY: PHARAD S/N
3. PART MARKING: PHARAD MODEL NUMBER
4. FREQUENCY OF OPERATION: 4400-5900 MHz
5. WEIGHT: 0.35 OZ

REVISIONS				
ZONE	REV.	DESCRIPTION	DATE	APPROVED
N/A	A	ENG RELEASE	4/10/2019	BZG



PROPRIETARY AND CONFIDENTIAL
 THE INFORMATION CONTAINED IN THIS DRAWING IS THE SOLE PROPERTY OF PHARAD, LLC. ANY REPRODUCTION IN PART OR AS A WHOLE WITHOUT THE WRITTEN PERMISSION OF PHARAD, LLC IS PROHIBITED.

UNLESS OTHERWISE SPECIFIED: DIMENSIONS ARE IN INCHES TOLERANCES: TWO PLACE DECIMAL ±.010 THREE PLACE DECIMAL ±.005 ANGULAR ±1°	DRAWN: BZG CHECKED: ENG APPR.: MFG APPR.:	NAME: BZG DATE: 4/10/2019	PHARAD, LLC 1340 CHERRYWOOD ROAD, SUITE L HANOVER, MD 21076
MATERIAL: SEE NOTES FINISH: SEE NOTES DO NOT SCALE DRAWING	COMMENTS:		TITLE: ASSEMBLY, STUB ANTENNA, 4400-5900 MHz
SIZE: DWG. NO. C SA-4400-5900		REV: A	SCALE: 2:1
			SHEET 1 OF 1