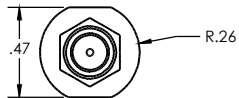
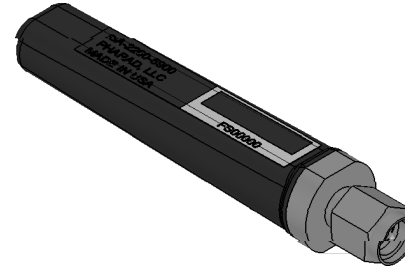
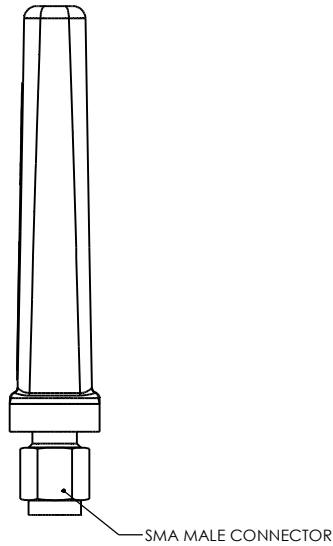
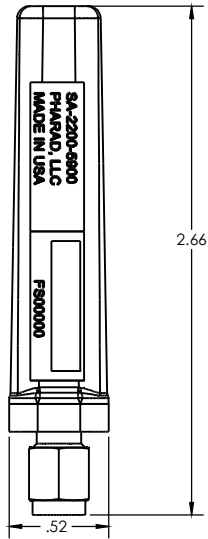


NOTES:

1. PHARAD P/N: 103240
2. TRACEABILITY: PHARAD S/N
3. PART MARKING: PHARAD MODEL NUMBER
4. FREQUENCY OF OPERATION: 2200-2500/4000-5000/5900 MHz
5. WEIGHT: .35 OZ

REVISIONS				
ZONE	REV.	DESCRIPTION	DATE	APPROVED
N/A	A	ENG RELEASE	2/4/2020	BZG



**PROPRIETARY AND CONFIDENTIAL**  
 THE INFORMATION CONTAINED IN THIS DRAWING IS THE SOLE PROPERTY OF PHARAD, LLC. ANY REPRODUCTION IN PART OR AS A WHOLE WITHOUT THE WRITTEN PERMISSION OF PHARAD, LLC IS PROHIBITED.

UNLESS OTHERWISE SPECIFIED: DIMENSIONS ARE IN INCHES TOLERANCES: TWO PLACE DECIMAL ±.010 THREE PLACE DECIMAL ±.005 ANGULAR ±1°	DRAWN BZG	NAME BZG	DATE 2/4/2020	PHARAD, LLC 1340 CHARWOOD ROAD, SUITE L HANOVER, MD 21076
SEE NOTES	CHECKED	ENG APPR.	MFG APPR.	TITLE: ASSEMBLY, STUB ANTENNA, 2200-2500/4000-5000/5900 MHz
SEE NOTES	COMMENTS:			SIZE DWG. NO. <b>C</b> SA-2200-5900
DO NOT SCALE DRAWING	SCALE: 2:1			REV <b>A</b> SHEET 1 OF 1