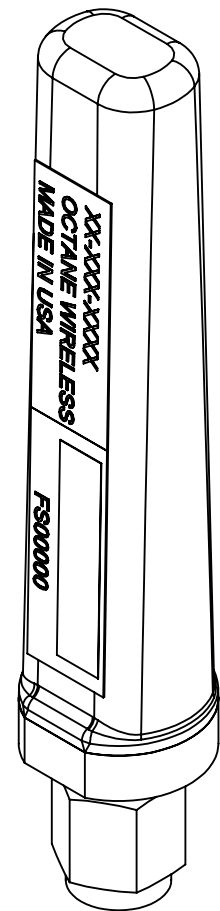


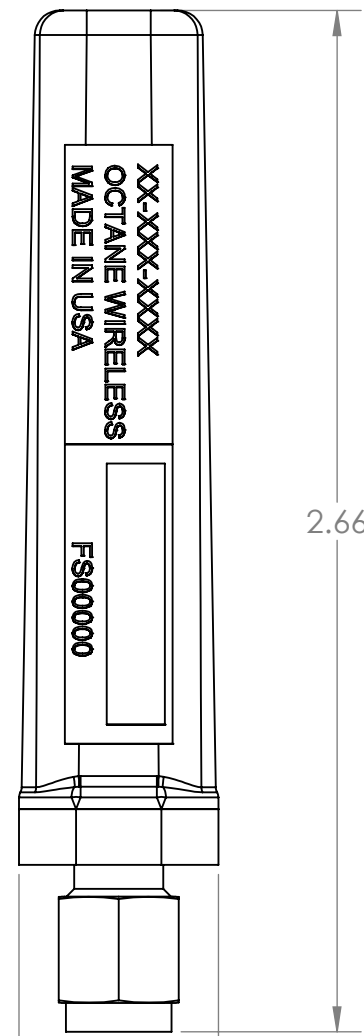
NOTES:

1. OCTANE P/N: 102884
2. TRACEABILITY: OCTANE S/N
3. ALL DIMENSIONS IN PARENTHESES () ARE REFERENCE ONLY.
6. PART MARKING: OCTANE MODEL NUMBER LABEL
5. FREQUENCY RANGE: 2200-2300/4400-4900 MHz
6. WEIGHT: 0.35 OZ

| REVISIONS | | | | |
|-----------|------|-------------|-----------|----------|
| ZONE | REV. | DESCRIPTION | DATE | APPROVED |
| N/A | A | DWG RELEASE | 4/10/2019 | BZG |
| N/A | B | DWG UPDATE | 5/10/2021 | CLQ |



ISO VIEW

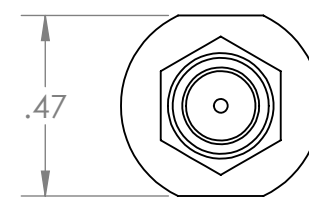


FRONT VIEW

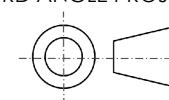


RIGHT VIEW

SMA CONNECTOR, MALE



BOTTOM VIEW

THIRD ANGLE PROJECTION

PROPRIETARY AND CONFIDENTIAL
 THE INFORMATION CONTAINED IN THIS DRAWING IS THE SOLE PROPERTY OF OCTANE WIRELESS. ANY REPRODUCTION IN PART OR AS A WHOLE WITHOUT THE WRITTEN PERMISSION OF OCTANE WIRELESS IS PROHIBITED.

| | | |
|-----------------------------|--------------|----------|
| UNLESS OTHERWISE SPECIFIED: | NAME | DATE |
| DIMENSIONS ARE IN INCHES | DRAWN BZG | 05/24/19 |
| TOLERANCES: | CHECKED CLQ | 05/10/21 |
| TWO PLACE DECIMAL ±.010 | ENG APPR. DN | 05/24/19 |
| THREE PLACE DECIMAL ±.005 | MFG APPR. AF | 05/24/19 |
| ANGULAR ±1° | COMMENTS: | |
| MATERIAL | SEE NOTES | |
| FINISH | SEE NOTES | |
| DO NOT SCALE DRAWING | | |

| | | |
|---|---------------------|--------------|
| OCTANE WIRELESS 1340 CHARWOOD ROAD, SUITE L HANOVER, MD 21076 | | |
| TITLE: ASSEMBLY, STUB ANTENNA, 2200-2300/4400-4900 MHz, SMA MALE CONNECTOR | | |
| SIZE | DWG. NO. | REV |
| C | SA-2200-4900 | B |
| SHEET SCALE 2:1 | | SHEET 1 OF 1 |