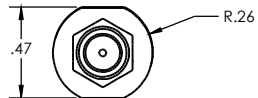
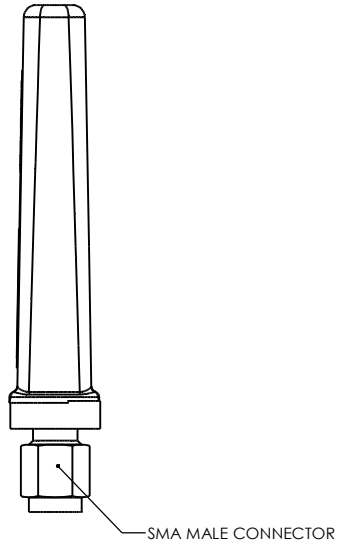
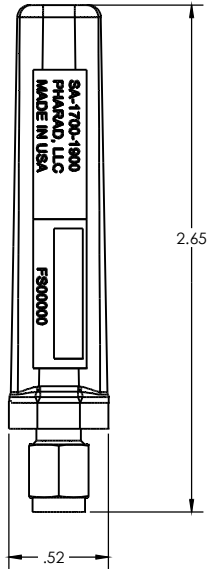


NOTES:

1. PHARAD P/N: 102883
2. TRACEABILITY: PHARAD S/N
3. PART MARKING: PHARAD MODEL NUMBER
4. FREQUENCY OF OPERATION: 1700-1900 MHz
5. WEIGHT: .35 OZ

REVISIONS				
ZONE	REV.	DESCRIPTION	DATE	APPROVED
N/A	A	ENG RELEASE	4/10/2019	BZG



PROPRIETARY AND CONFIDENTIAL
 THE INFORMATION CONTAINED IN THIS DRAWING IS THE SOLE PROPERTY OF PHARAD, LLC. ANY REPRODUCTION IN PART OR AS A WHOLE WITHOUT THE WRITTEN PERMISSION OF PHARAD, LLC IS PROHIBITED.

UNLESS OTHERWISE SPECIFIED: DIMENSIONS ARE IN INCHES		DRAWN	BZG	DATE	4/9/2019	PHARAD, LLC 1340 CHARWOOD ROAD, SUITE L HANOVER, MD 21076 TITLE: ASSEMBLY, STUB ANTENNA, 1700-1900 MHz SIZE DWG. NO. REV C SA-1700-1900 A SCALE: 2:1 SHEET 1 OF 1
TOLERANCES: TWO PLACE DECIMAL ±.010 THREE PLACE DECIMAL ±.005 ANGULAR ±1°		CHECKED				
MATERIAL		ENG APPR.				
SEE NOTES		MFG APPR.				
FRESH		COMMENTS:				
DO NOT SCALE DRAWING						