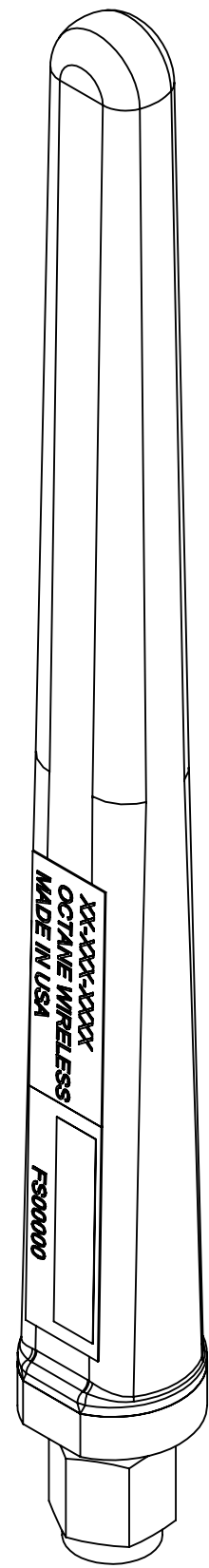


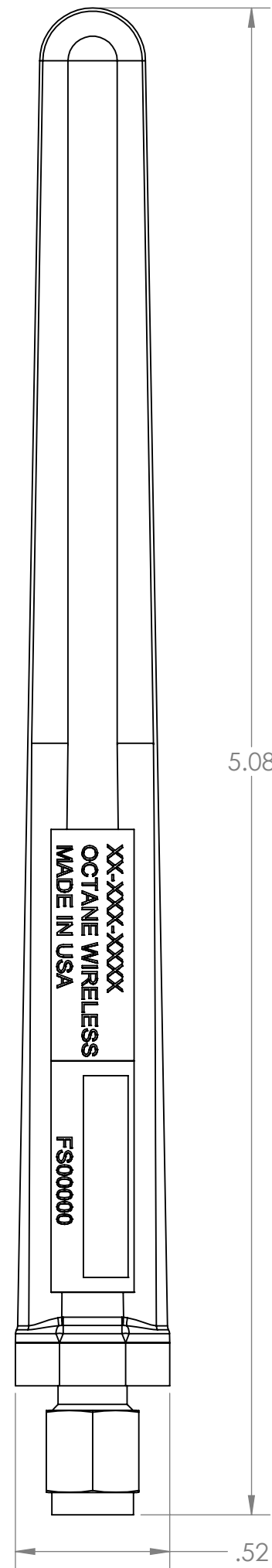
NOTES:

1. OCTANE P/N: 103281
2. TRACEABILITY: OCTANE S/N
3. ALL DIMENSIONS IN PARENTHESES () ARE REFERENCE ONLY.
6. PART MARKING: OCTANE MODEL NUMBER LABEL
5. FREQUENCY RANGE: 1350-1390 MHz
6. WEIGHT: 0.45 OZ

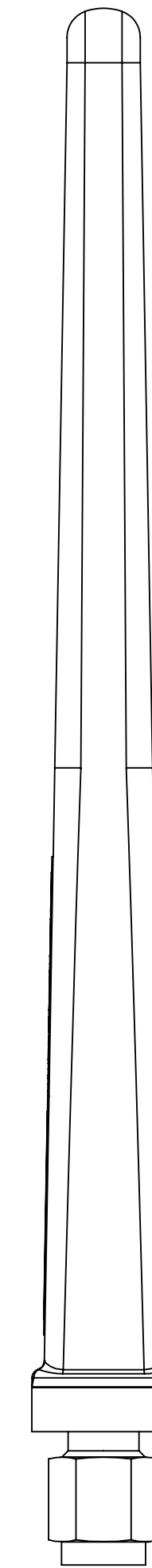
REVISIONS				
ZONE	REV.	DESCRIPTION	DATE	APPROVED
N/A	A	DWG RELEASE	4/6/2020	BZG
N/A	B	DWG UPDATE	5/5/2021	CLQ



ISO VIEW

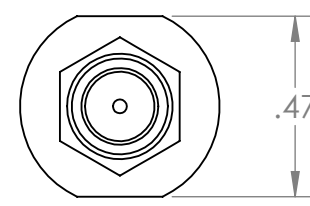


FRONT VIEW

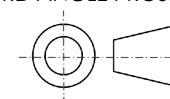


RIGHT VIEW

SMA CONNECTOR, MALE



BOTTOM VIEW

**THIRD ANGLE PROJECTION**  
  
**PROPRIETARY AND CONFIDENTIAL**  
 THE INFORMATION CONTAINED IN THIS DRAWING IS THE SOLE PROPERTY OF OCTANE WIRELESS. ANY REPRODUCTION IN PART OR AS A WHOLE WITHOUT THE WRITTEN PERMISSION OF OCTANE WIRELESS IS PROHIBITED.

UNLESS OTHERWISE SPECIFIED: DIMENSIONS ARE IN INCHES	NAME	DATE	OCTANE WIRELESS 1340 CHARWOOD ROAD, SUITE L HANOVER, MD 21076
TOLERANCES: TWO PLACE DECIMAL ±.010 THREE PLACE DECIMAL ±.005 ANGULAR ±1°	DRAWN	BZG 05/24/19	
MATERIAL	CHECKED	CLQ 05/05/21	
FINISH	ENG APPR.	DN 05/24/19	
DO NOT SCALE DRAWING	MFG APPR.	AF 05/24/19	
COMMENTS:			

**TITLE:**  
 ASSEMBLY, STUB ANTENNA,  
 EXTENDED LENGTH, 1350-1390  
 MHZ, SMA MALE CONNECTOR

SIZE	DWG. NO.	REV
<b>C</b>	SA-1350-1390	<b>B</b>
SHEET SCALE 2:1		SHEET 1 OF 1