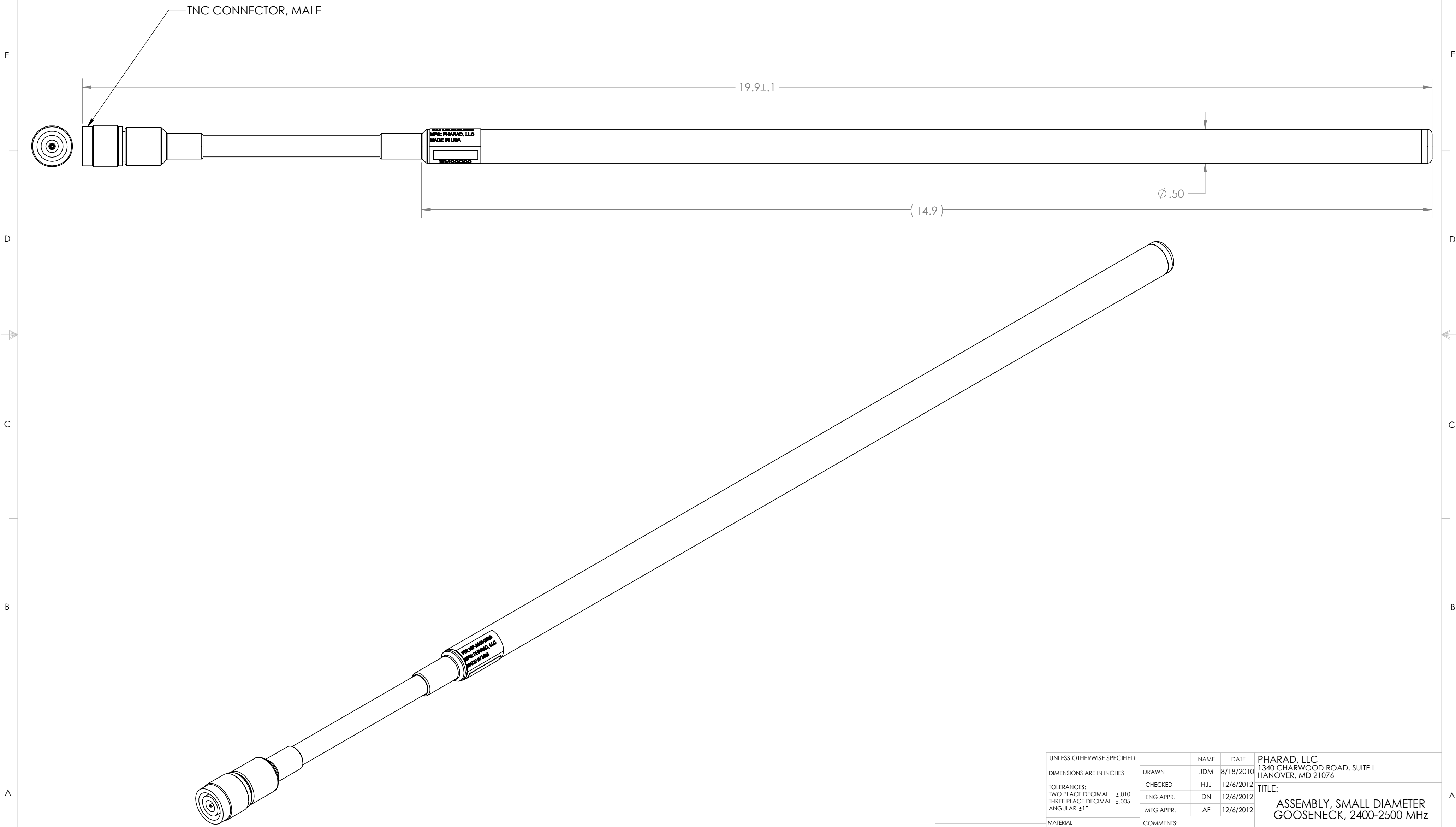


- NOTES:
1. PHARAD P/N: 100836
  2. TRACEABILITY: PHARAD S/N
  3. PART MARKING: PHARAD MODEL NUMBER
  4. FREQUENCY OF OPERATION: 2400-2500 MHz
  5. WEIGHT: 4 OZ

REVISIONS				
ZONE	REV.	DESCRIPTION	DATE	APPROVED
N/A	A	ENGINEERING PROTOTYPE	8/18/2010	JDM
N/A	A-02	CHAGED SOME MATERIALS TO "AR"	12/10/2012	TJP
N/A	B	UPDATE DIMENSIONS AND WEIGHT	4/24/2013	DJG
N/A	C	UPDATED RADOME AND PCB	7/30/2019	BZG



**PROPRIETARY AND CONFIDENTIAL**  
 THE INFORMATION CONTAINED IN THIS DRAWING IS THE SOLE PROPERTY OF PHARAD, LLC. ANY REPRODUCTION IN PART OR AS A WHOLE WITHOUT THE WRITTEN PERMISSION OF PHARAD, LLC IS PROHIBITED.

UNLESS OTHERWISE SPECIFIED:	NAME	DATE
DIMENSIONS ARE IN INCHES	DRAWN JDM	8/18/2010
TOLERANCES:	CHECKED HJJ	12/6/2012
TWO PLACE DECIMAL ±.010	ENG APPR. DN	12/6/2012
THREE PLACE DECIMAL ±.005	MFG APPR. AF	12/6/2012
ANGULAR ±1°	COMMENTS:	
MATERIAL	SEE NOTES	
FINISH	SEE NOTES	
DO NOT SCALE DRAWING		

PHARAD, LLC  
 1340 CHARWOOD ROAD, SUITE L  
 HANOVER, MD 21076

TITLE:  
**ASSEMBLY, SMALL DIAMETER  
 GOOSENECK, 2400-2500 MHz**

SIZE	DWG. NO.	REV
<b>C</b>	<b>MP-2400-2500</b>	<b>C</b>

SCALE: 1:1 SHEET 1 OF 1