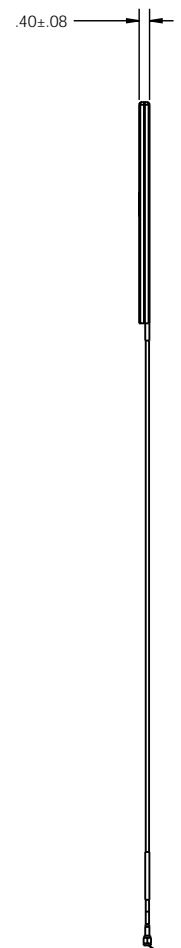
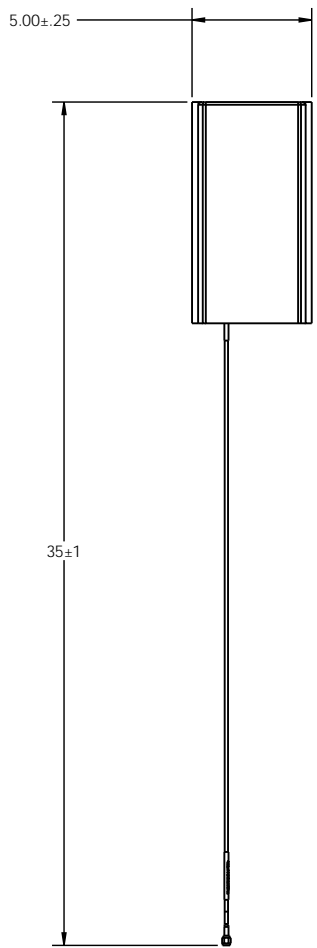
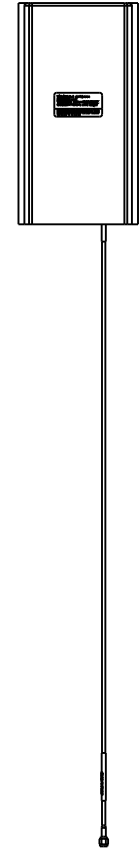


- NOTES:
1. PHARAD P/N 100845
 2. TRACEABILITY: PHARAD S/N
 3. PART MARKING: PHARAD LABEL 101108-027
 4. FREQUENCY OF OPERATION: 330 - 380 MHz
 5. WEIGHT: 3 OZ

REVISIONS				
ZONE	REV.	DESCRIPTION	DATE	APPROVED
N/A	A	ENGINEERING PROTOTYPE	8/25/2010	JDM
N/A	A-01	REVISED POUCH LABEL TO INCLUDE S/N	2/22/2011	JDM



SMA CONNECTOR, MALE



PROPRIETARY AND CONFIDENTIAL
 THE INFORMATION CONTAINED IN THIS DRAWING IS THE SOLE PROPERTY OF PHARAD, LLC. ANY REPRODUCTION IN PART OR AS A WHOLE WITHOUT THE WRITTEN PERMISSION OF PHARAD, LLC IS PROHIBITED.

UNLESS OTHERWISE SPECIFIED:		NAME	DATE	PHARAD, LLC 197 CROMWELL PARK DRIVE, SUITE V GLEN BURNIE, MD 21061 TITLE: ASSEMBLY, WEARABLE ANTENNA, 330-380 MHz
DIMENSIONS ARE IN INCHES		DRAWN	JDM	
TOLERANCES:		CHECKED		
TWO PLACE DECIMAL: ±.010		ENG APPR.		
THREE PLACE DECIMAL: ±.005		MFG APPR.		
ANGULAR: ±1°		COMMENTS:		
MATERIAL		SEE NOTES		
FINISH		SEE NOTES		
DO NOT SCALE DRAWING				
SIZE	DWG. NO.	REV		
C	BW-330-380	A-01		
SCALE: 1:4			SHEET 1 OF 1	